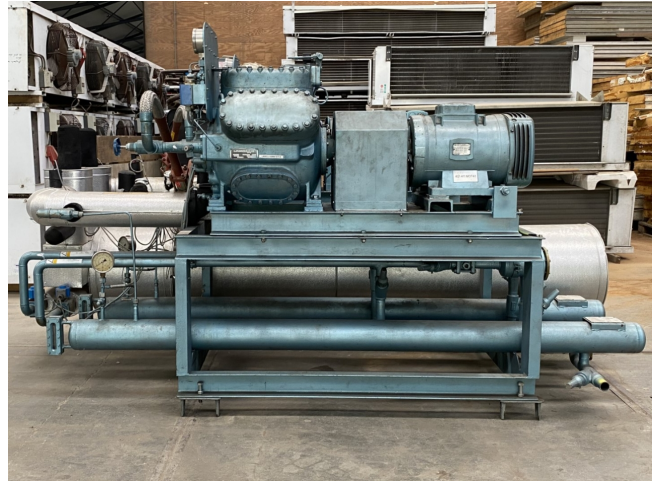


Grasso RC 66 (2x)

Specifications

Marka	Grasso
Typ	RC 66 (2x)
Typ produktu	Air Cooled Chiller (split-unit)
Ogólna wydajność w kW	259,2*
Ogólna wydajność w	73,7*
Tonaż	
Czynnik chłodzący	Freon
Typ czynnika chłodzącego	R134a
Rozmiary	3250x1730x1700 mm (LxWxH)
Compressor(s) type & model	Grasso RC 66 (2x)
Uwagi	*Capacity based on the Freon type: R22 and following temperatures: -5°C/+40 °C.
Stock	2



Description

Used Grasso RC 66 (2x)

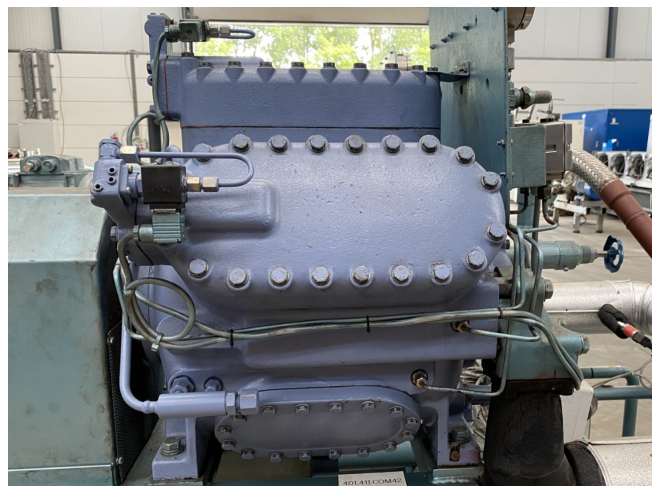
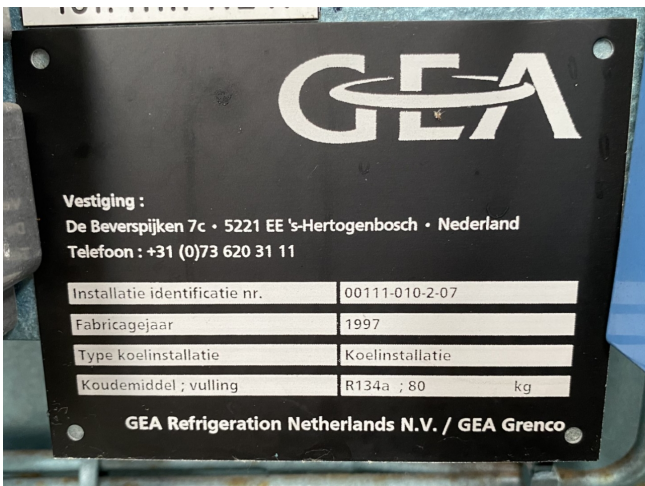
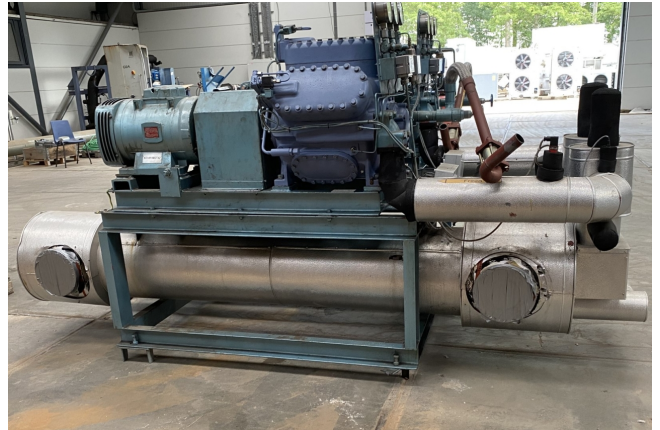
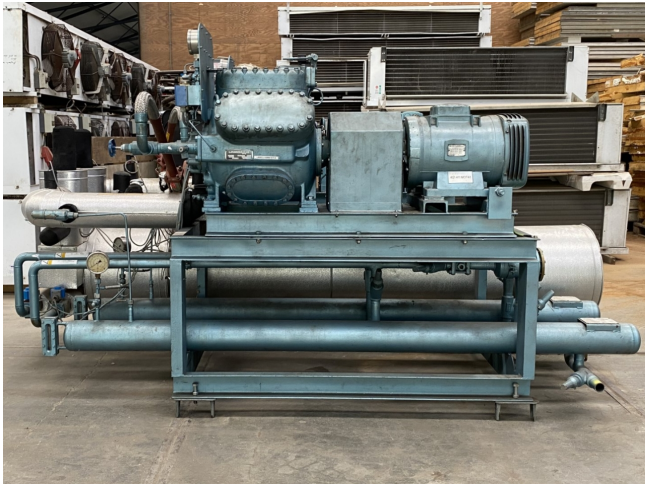
Used GEA Grasso RC 66 air cooled split chiller for R134a. Complete with two Grasso RC 66 open type reciprocating compressors and two Leroy Somer PLS180L-T electric motors - 380 V - 50 Hz - 1440 RPM - 30 kW. The unit has two separate refrigeration circuits with one shell and tube heat exchanger. Furthermore the unit contains two PLV125/2500 liquid receivers with a volume of 34 liter. The chiller has a capacity of 259,2 kW based on R22 and the following temperatures: -5°C/+40 °C.

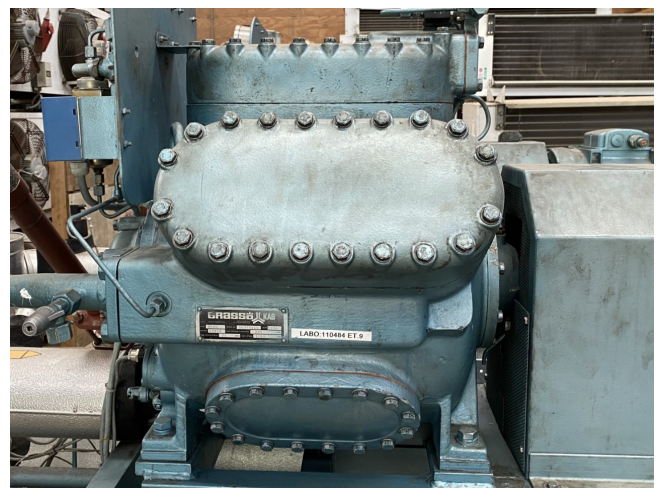
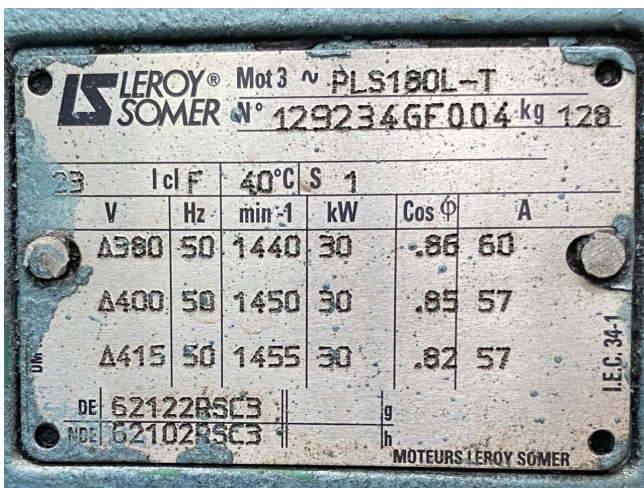
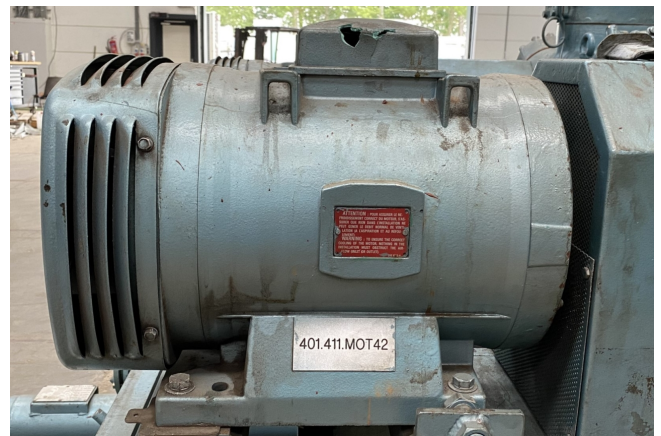
*All components of this used chiller will be tested on adequate performance, leak free condition (condensing blocks), compressors, fans, control panel, and so forth). Choosing HOSBV means buying with warranty. We perform an



Your partner for used commercial and industrial refrigeration equipment

industrial cleaning. *If requested we are happy to arrange your shipment.







P.23		Icl F		40°C S 1	
V	Hz	min ⁻¹	kW	Cos φ	A
Δ380	50	1440	30	.86	60
Δ400	50	1450	30	.85	57
Δ415	50	1455	30	.82	57

LEROY SOMER Mot 3 ~ PLS180L-T
 N° 129234GE003 kg 128
 DE 62122RSC3
 NDE 62102RSL3
 DM 1533 D I.E.C. 34-1
 MOTEURS LEROY SOMER



POST KOUDETECHNIEK BV 's-HERTOGENBOSCH (NL)	
REG. NR.: 11R57	YEAR B 1996
MEDIUM: R-134A	
NET CAPACITY: 0.034 m ³	
DESIGN/TEST PRESS: 21.28 BAR	
DESIGN TEMP.: 0/50 °C	
TYPE PLV125 2500	



